

# Section 17: Upgrading the Operational Firmware

## *Upgrading the Epilog Dashboard*

Occasionally Epilog provides enhancements or upgrades to the Dashboard. Upgrading to the new driver is almost identical to installing a driver for the first time. When upgrading to a new Dashboard, it is best if you first delete the old one, reboot your computer and then install the new one (see the *Installing the Epilog Dashboard* section of this manual ).

When you upgrade to a new Dashboard, the Configurations settings that you have been saving may not be accessible to the new driver.

The Configuration files are the .DAT settings you make to save your driver settings.



Use the following instructions to convert your saved Configurations .DAT files to be accessible with a new driver (please note that not all new drivers will require this conversion. We indicate with every new Dashboard version if conversion is necessary).

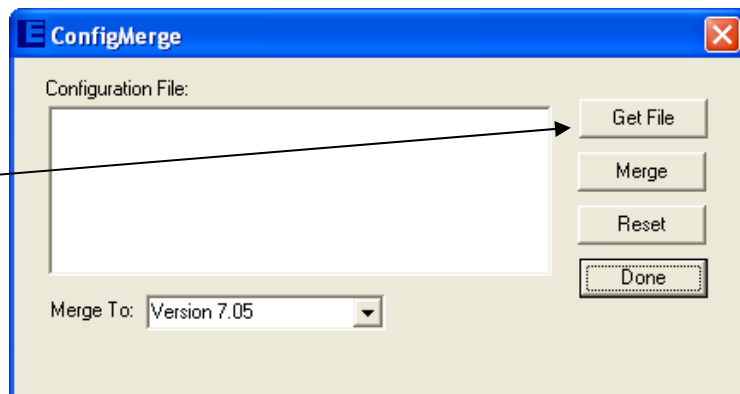
When necessary, Epilog uses a ConfigMerge program to convert old Configurations Settings (.DAT files) to be compatible with the upgraded driver. The ConfigMerge.exe file can be downloaded from the driver download page at [www.epiloglaser.com](http://www.epiloglaser.com). The ConfigMerge.exe program icon looks similar to this when you have downloaded it to your computer:



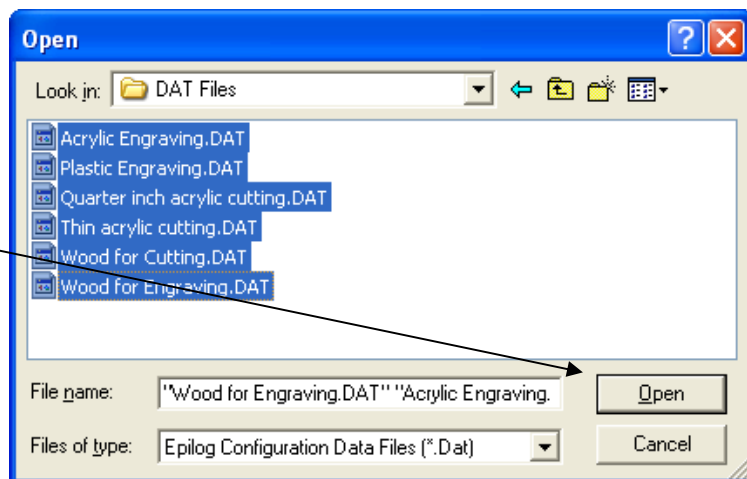
# Section 17: Upgrading the Operational Firmware

## *Converting Old .DAT Files to Be Compatible with a New Dashboard*

Open (double click) the ConfigMerge.exe file that came with the new driver. Click on the Get File button and navigate to the folder where you save your .DAT files.



Highlight the files that you want to convert, and then click on the Open button.

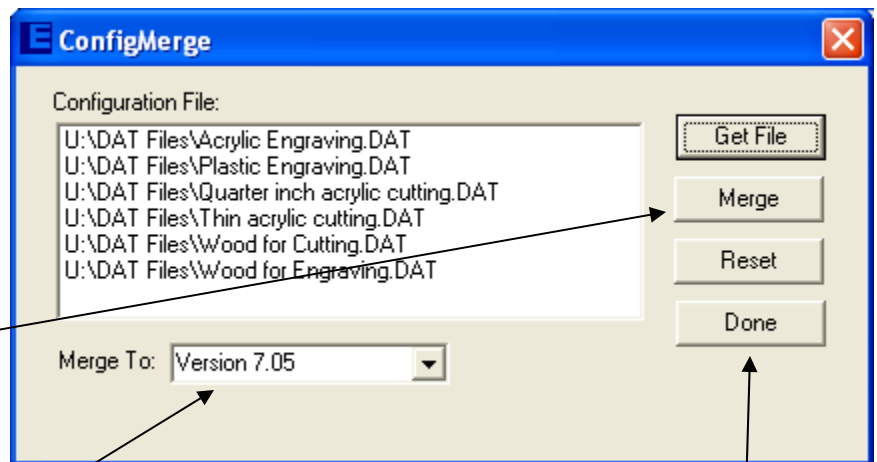


# Section 17: Upgrading the Operational Firmware

The files that you highlighted and Opened will then show in the ConfigMerge window.

Click on the Merge button (you do not need to highlight the files again).

Your old .DAT files will be converted to be compatible with the new driver (Version 7.05 in this case).



After clicking the Merge button the screen at the left will appear. Click on the Done button and you're finished.

# Section 17: Upgrading the Operational Firmware

---

The Merge feature does not delete the old .DAT files. It creates new files using the same name, but adding the new driver version number ( \_705 in this case). In the following screen you can see that the original file is named Acrylic Engraving.DAT. The merged file is named Acrylic Engraving\_705.DAT.

Once you are sure your files have been converted to the new driver version, you can delete the old files.

